

# Self guided tour of DeyDey's Ranch

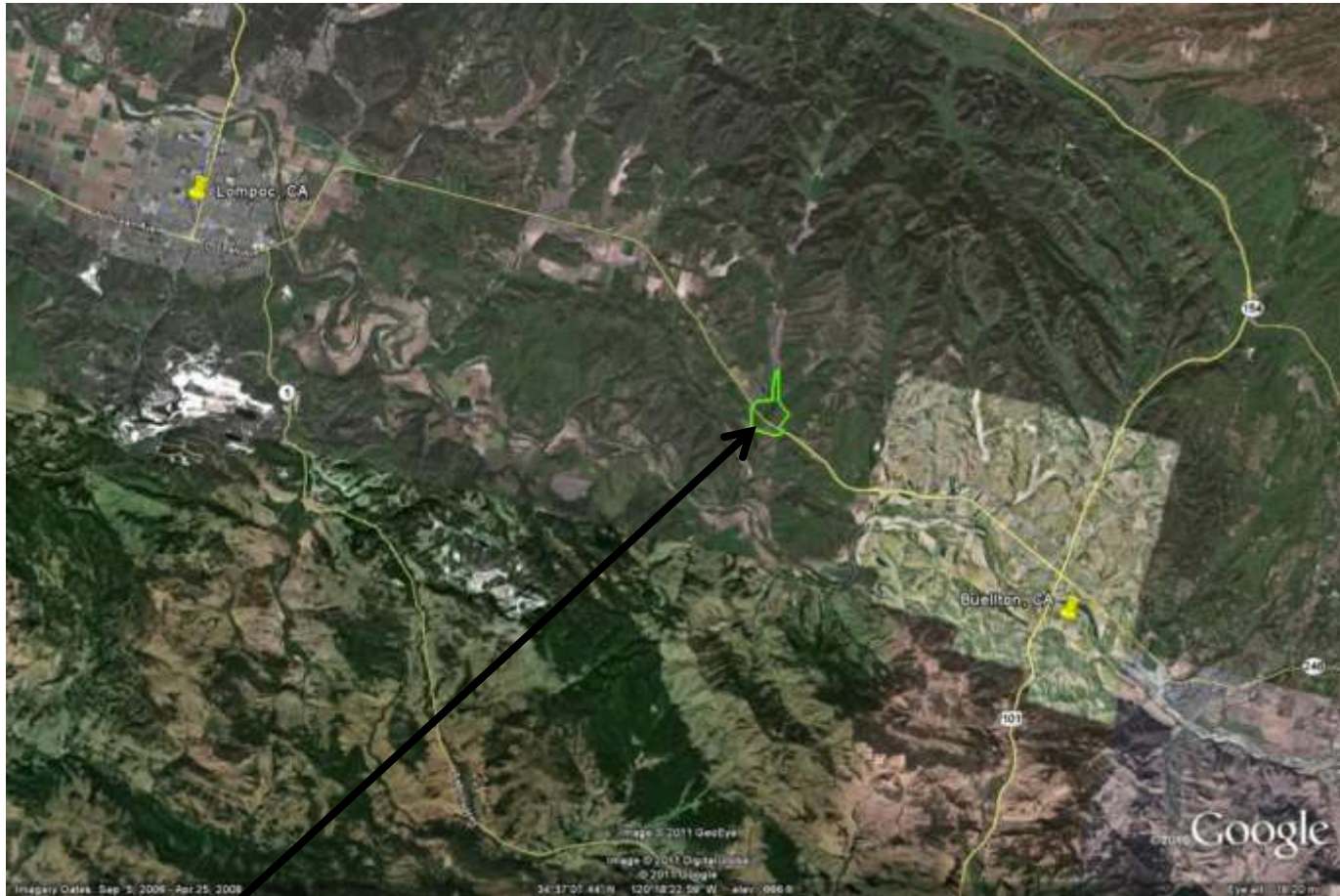


Welcome to our Ranch  
John, Nadine and the Grandkids

# Who we are

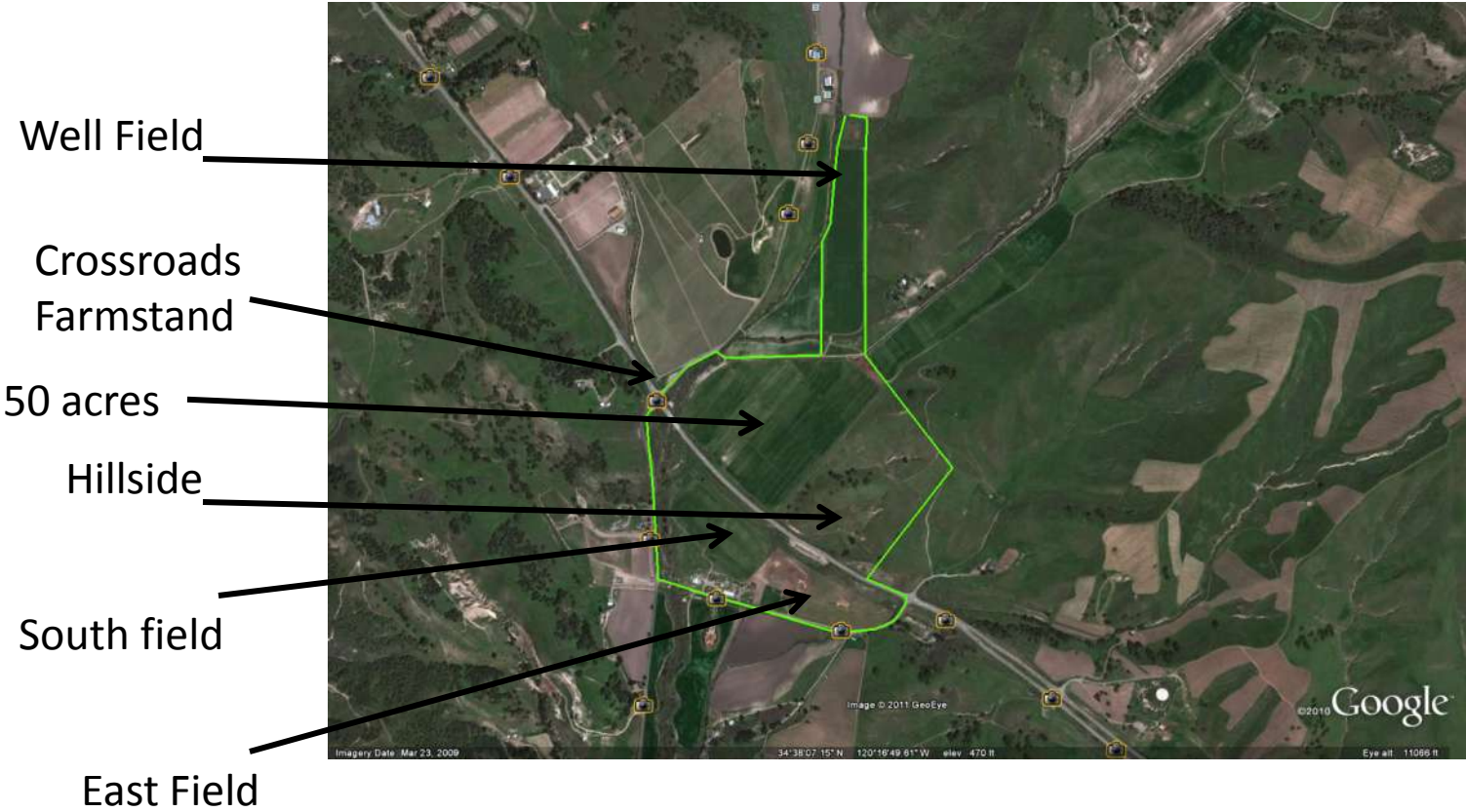
- We are a family enterprise dedicated to providing our community with the best tasting and healthiest beef and chicken we know how to raise
- We do this in a way that respects our environment which sustain us
- We use sustainable practices to improve our soils over time and include an avid recycling program as an integral part of our enterprise

# Location of the Ranch



Our Ranch is located just 40 minutes north of Santa Barbara. Proceed north on Highway 101 to Buellton. Turn left on Highway 246, continue six miles.

# Picture of the Ranch and the definitions of the various pastures



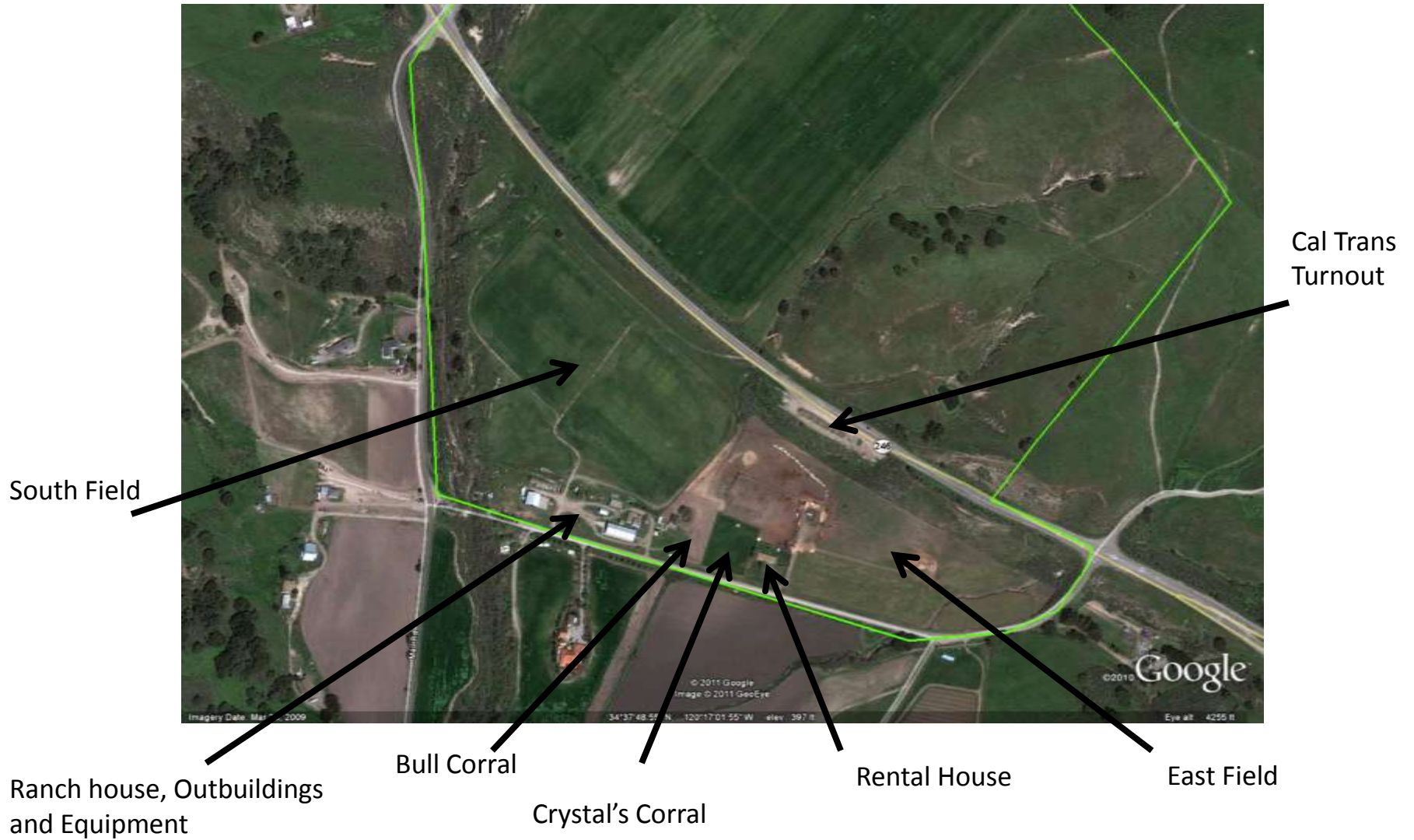
# How to see the ranch

- There are four locations from which to get a good view of the ranch and explore some of its features
  - View from Domingos Road
  - View from the Cal Trans turnout just west of Domingos Road
  - View from the Santa Rita Crossroads Farm Stand
  - View from the entrance to the 50 acres
  - View from the entrance into the well field
- The Santa Rita Crossroads Farm Stand is open on Wednesday and Saturday from 12-5 pm. If you would like to have an opportunity to purchase farm fresh, organic and local produce including *DeyDey's* 100% Grassfed Beef, and Organic, Pature-Raised Chicken and Eggs, visit us during these times.

# View from Domingos Road

- How to get there: Drive west six miles from Buellton along Highway 246. Turn left on to Domingos Road
- Our ranch is on the right hand side of Domingos Road  
As you drive you will see
  1. The East Field – improved irrigated pasture
  2. The Rental House
  3. The Horse Corral for the horses of Crystal, our Herd Manager
  4. The Bull Corral
  5. The Ranch House, Outbuildings and Farm Equipment
  6. The South Field

# View from Domingos Road and Cal Trans Turnout



# CAL Trans Turnout

- How to get there: Instead of turning left on Domingos Road, continue west on Highway 246 towards Lompoc. Pull off the road at the first large turnout (on your left) after Domingos Road
- Park away from the road and walk towards the back of the turnout. Walk up onto the berm. This will give you a great view of the South side of the ranch
- Look across Highway 246. You will see our Hillside. This picturesque area offers a man made pond to water the cows, beautiful oaks to shade them and a mini canyon just above the pond formed by years of runoff from the hills

# The Santa Rita Crossroads Farm Stand

- How to get there: From the Cal Trans Turnout, continue another mile west on Highway 246 towards Lompoc. At Drum Canyon Road turn right. You will see the Farm Stand immediately on your left
- Come meet Jeff and Roxanne, our neighbors and partners in this. Our Farmstand is open from 12-5 on Wednesday and Saturday. We sell our beef, chicken and other organic products such as flowers, veggies, honey, candles, etc.
- Stop by and visit with us to get some of our great products

# The Farmstand



The Farmstand  
Area

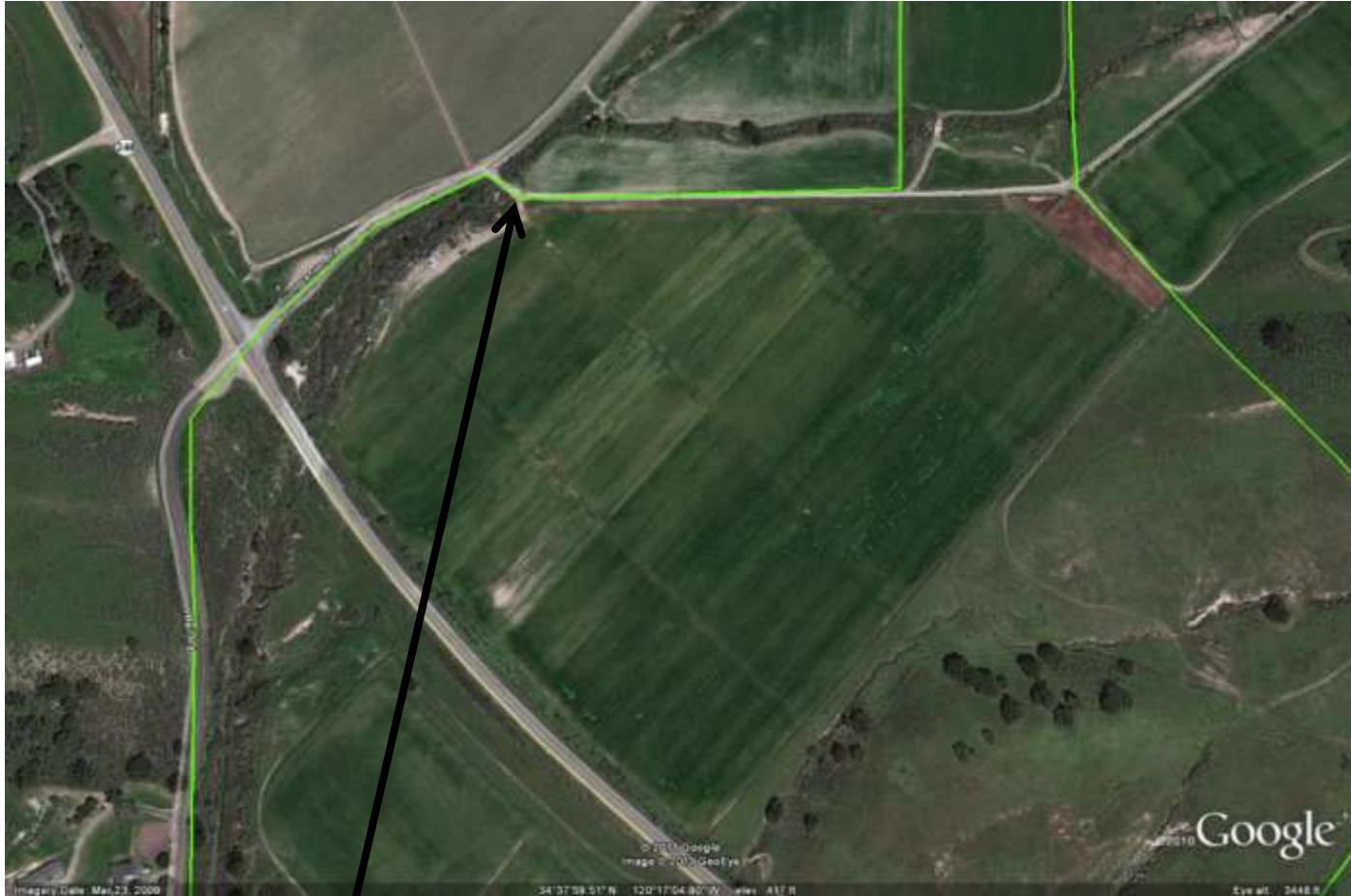
The Store

Parking

# Entrance to the 50 Acres

- Getting there: Proceed past the Farmstand on Drum Canyon Road to the first dirt road to the right and turn. Proceed to the first gate on the right
- The view from this point is spectacular in the spring. The field is beautifully green and hillsides with cattle grazing give such a restful feeling. Note the water tank on the crest of the hillside providing all the water for our cattle on a daily basis
- This field is irrigated in the summer to keep the grass beautifully green and nutritious for our stock

# Entrance to the 50 acres



Entrance to the 50 Acres

# Entrance to the Well Field

- To get there: Proceed past the Entrance to the 50 Acres, up the dirt road to the first dirt road on the left and turn there. Stop and note the following sites
- If you continue forward to the gate of the Well field, you will see the pasture crop we are currently growing for our cows in that field
- Across the street is one of our cattle working areas. Here we weigh, vaccinate, castrate or quarantine our animals as necessary.

# Entrance to the Well Field



Entrance into Well Field

Northside Cattle Working Area

# End of the Tour

- We thank you so much for coming and visiting our ranch
- We hope you enjoyed the tour whether it be from these few pages on in actuality
- We are committed to the highest quality beef and chicken we can raise and are proud to share these gifts with you
- Thank you for your time and patronage